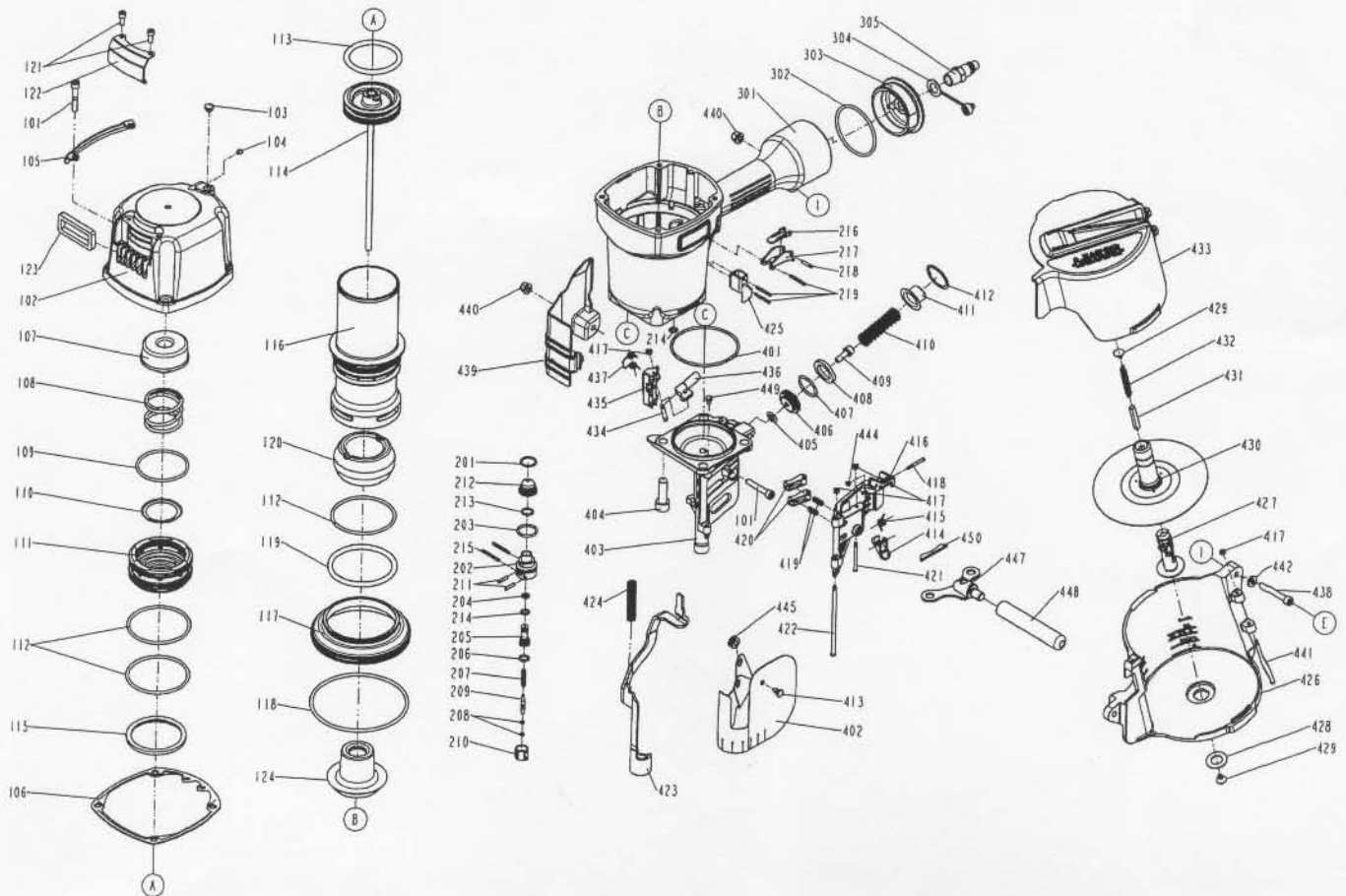


DIAGRAM OF DK/CN100



| ITEM NO. | PART NO. | DESCRIPTION | ITEM NO. | PART NO. | DESCRIPTION | ITEM NO. | PART NO. | DESCRIPTION |
|----------|-----------------|--------------------|----------|-----------------|--------------------|----------|-----------------|-------------------------|
| 101 | 2040101-04121-0 | HEX.SOC.HD.BOLT | 210 | 11373-0860001-1 | TRIGGER VALVE HEAD | 419 | 1133C-0860001-1 | STOPPER FINGER SPRING |
| 102 | 11369-1035301-1 | CAP | 211 | 11329-0860001-1 | PIN | 420 | 11358-0864701-1 | NAIL STOP |
| 103 | 1135S-0350001-1 | GROMMET | 212 | 1137A-0860001-1 | COVER-PLUNGER | 421 | 11359-1034701-1 | PIN-NAIL STOP |
| 104 | 2040104-03010-0 | HEX.SOC.HD.SCREW | 213 | 2041104-02070-0 | O - RING | 422 | 11362-1034701-1 | DOOR SHAFT PIN |
| 105 | 11397-1034701-1 | GUIDE COVER | 214 | 2041100-01050-0 | O - RING | 423 | 11330-1034701-1 | SAFETY |
| 106 | 11302-1034701-1 | CYLINDER CAP SEAL | 215 | 2040401-05150-0 | SPIRAL PINS | 424 | 11337-1030001-1 | SAFETY SPRING |
| 107 | 11370-1030001-1 | SEAL | 216 | 11317-0864701-2 | SECONDARY TRIGGER | 425 | 11338-0864701-1 | SAFETY GUIDE |
| 108 | 11360-1030001-2 | COMPRESSION SPRING | 217 | 11316-0864701-2 | TRIGGER | 426 | 11354-1034701-1 | MAGAZINE CASE |
| 109 | 2041108-06050-0 | O - RING | 218 | 2040400-05080-0 | SPRING PIN | 427 | 11357-1034701-1 | MAGAZINE POST |
| 110 | 11381-1030001-1 | WASHER | 219 | 2040401-05120-0 | SPIRAL PINS | 428 | 1138Y-0954701-2 | RUBBER RING |
| 111 | 11368-1030001-1 | HD.VALVE PISTON | 301 | 11230-1035201-1 | GUN BODY UNIT | 429 | 1134M-0864701-1 | SPRING BASE |
| 112 | 2041108-07050-0 | O - RING | 302 | 2041101-05020-0 | O - RING | 430 | 11356-1030001-1 | SPACER |
| 113 | 2041100-06011-0 | O - RING | 303 | 11346-0864302-1 | END CAP | 431 | 1138W-0860001-1 | SPACER |
| 114 | 11204-1030001-1 | DRIVER UNIT | 304 | 1132L-0350001-1 | AIR PLUG CAP | 432 | 11328-0970001-1 | PULL SPRING |
| 115 | 11399-1030001-1 | COLLAR | 305 | 1135V-0000009-1 | AIR PLUG | 433 | 11355-1034701-1 | MAGAZINE COVER |
| 116 | 11320-1030002-1 | CYLINDER | 401 | 2041104-08020-0 | O - RING | 434 | 11365-0864701-1 | PIN FEED PISTON |
| 117 | 11321-1030001-1 | CYLINDER SPACER | 402 | 11383-1030001-1 | MUZZLE PROTECTOR | 435 | 11306-1034701-1 | FEED FINGER |
| 118 | 2041104-11010-0 | O - RING | 403 | 11382-1034701-2 | NOSE PIECE | 436 | 11364-0974701-1 | FEED PISTON-A |
| 119 | 2041108-07060-0 | O - RING | 404 | 2040101-06010-2 | HEX.SOC.HD.BOLT | 437 | 11307-0970001-1 | FEED FINGER SPRING |
| 120 | 11327-1034702-1 | BUMPER-A | 405 | 2041100-01091-0 | O - RING | 438 | 2040101-04131-0 | HEX.SOC.HD.BOLT |
| 121 | 2040101-03050-9 | HEX.SOC.HD.BOLT | 406 | 11364-1034701-1 | FEED PISTON-B | 439 | 1134R-1034701-1 | SPRING COVER |
| 122 | 11371-1034701-1 | DEFLECTOR | 407 | 2041104-03040-0 | O - RING | 440 | 2040501-04010-0 | BOLT CAP |
| 123 | 1132T-1030001-1 | MUFFLER | 408 | 1134W-0970001-1 | FEED BUMPER | 441 | 1136R-1034701-1 | MAGAZINE SHAFT PIN |
| 124 | 11327-1034703-1 | BUMPER-B | 409 | 2040100-04080-2 | BOLT ASSY | 442 | 2040202-04010-0 | FLAT WASHER |
| 201 | 2041104-02060-0 | O - RING | 410 | 11367-1030001-1 | PUSHER SPRING | 444 | 1131D-0460001-1 | URETHANE RETAINER |
| 202 | 11374-0860001-1 | PLUNGER CAP | 411 | 11366-0974701-1 | FEED PISTON CAP | 445 | 1135U-1010001-1 | PROTECTOR WASHER |
| 203 | 2041100-02050-0 | O - RING | 412 | 2040300-08010-0 | C - RING | 447 | 1120K-1114701-1 | SECOND HANDLE BASE UNIT |
| 204 | 2041100-01070-0 | O - RING | 413 | 1134B-0864701-1 | DUST SHIELD PLUG | 448 | 1137K-1030001-1 | HANDLE |
| 205 | 1133S-0860001-1 | VALVE PLUNGER | 414 | 11310-0254702-1 | DOOR LATCH | 449 | 1135S-1034701-1 | GROMMET |
| 206 | 2041100-01030-0 | O - RING | 415 | 11311-1030001-1 | LATCH SPRING | 450 | 1135G-1114701-1 | RUBBER PAD |
| 207 | 11376-0860001-1 | SPRING | 416 | 11361-1034701-2 | DOOR | | | |
| 208 | 2041108-01020-0 | O - RING | 417 | 1135H-0860001-1 | PU RETAINER | | | |
| 209 | 11375-0860002-1 | PLUNGER | 418 | 1131K-1034701-1 | PIN | | | |