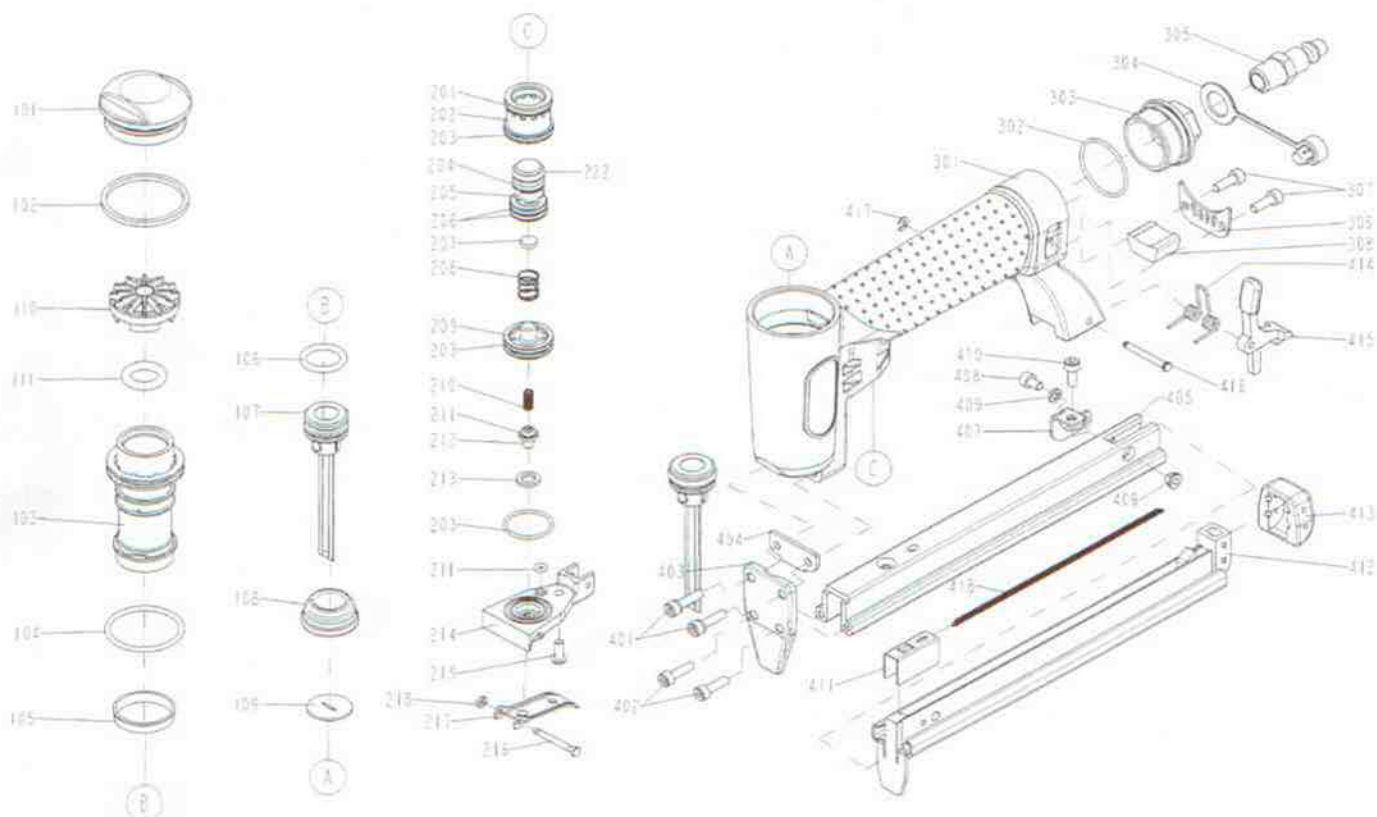


DIAGRAM OF DK71/16



ITEM NO.	PART NO.	DESCRIPTION	ITEM NO.	PART NO.	DESCRIPTION	ITEM NO.	PART NO.	DESCRIPTION
101	11371-0034703-1	DEFLECTOR	304	1132L-0010001-1	AIR PLUG CAP			
102	1132M-0034701-1	PACKING	305	1135V-0000007-1	AIR PLUG			
103	11320-0030005-2	CYLINDER	306	11394-0034702-1	GUIDE PLATE			
104	2041109-04070-0	O - RING	307	2040101-02060-0	HEX SOC.HD.BOLT			
105	11322-0034701-1	CYLINDER RING	308	1132T-0030002-1	MUFFLER			
106	2041106-02010-0	O - RING	401	2040100-02080-2	BOLT ASSY			
107	11204-0034701-1	DRIVER UNIT	402	2040101-02070-2	HEX.SOC.HD BOLT			
108	11327-0734701-2	BUMPER	403	11351-0034701-1	DRIVER GUIDE COVER			
109	11388-0034701-1	DRIVER GUIDE	404	11380-0034701-1	GASKET			
110	11370-0034702-2	SEAL	405	11391-0034701-2	MAGAZINE B			
111	2041107-02011-0	O-RING	406	1131F-0034701-1	ANCHOR BLOCK			
201	2041104-02080-0	O - RING	407	11323-0034701-3	BRACKET			
202	11373-0030002-1	TRIGGER VALVE HEAD	408	2040101-02020-0	HEX.SOC.HD.BOLT			
203	2041109-03030-0	O - RING	409	2040201-02040-0	FLAT WASHER			
204	2041109-02080-0	O - RING	410	2040101-02040-0	HEX.SOC.HD.BOLT			
205	1133S-0030002-2	VALVE PLUNGER	411	11363-0034702-1	PUSHER			
206	2041109-02120-0	O - RING	412	11241-0034701-2	DRIVER GUIDE UNIT			
207	1130J-0030001-1	CUSHION	413	11390-0034701-1	PROTECTING HOOD COVER			
208	11376-0034701-1	SPRING	414	11315-0034702-1	SPRING			
209	11374-0030002-1	PLUNGER CAP	415	11343-0034702-1	LATCH			
210	1133U-0014701-1	SPRING	416	11344-0034701-1	LATCH PIN			
211	2041104-01020-0	O - RING	417	2040302-22010-0	E - RING			
212	11375-0034701-1	PLUNGER	418	11328-0030001-1	PULL SPRING			
213	11399-0033001-1	COLLAR						
214	1133T-0030001-2	PLUNGER CAP						
215	2040102-02040-0	HALF ROUND HD.HEX.BOLT						
216	11318-0034702-1	TRIGGER PIVOT PIN						
217	11316-0034702-1	TRIGGER						
218	1131D-0460001-1	URETHANE RETAINER						
222	2041106-01010-0	O - RING						
301	11230-0035205-1	GUN BODY UNIT						
302	2041109-03040-0	O - RING						
303	11346-0034304-1	END CAP						