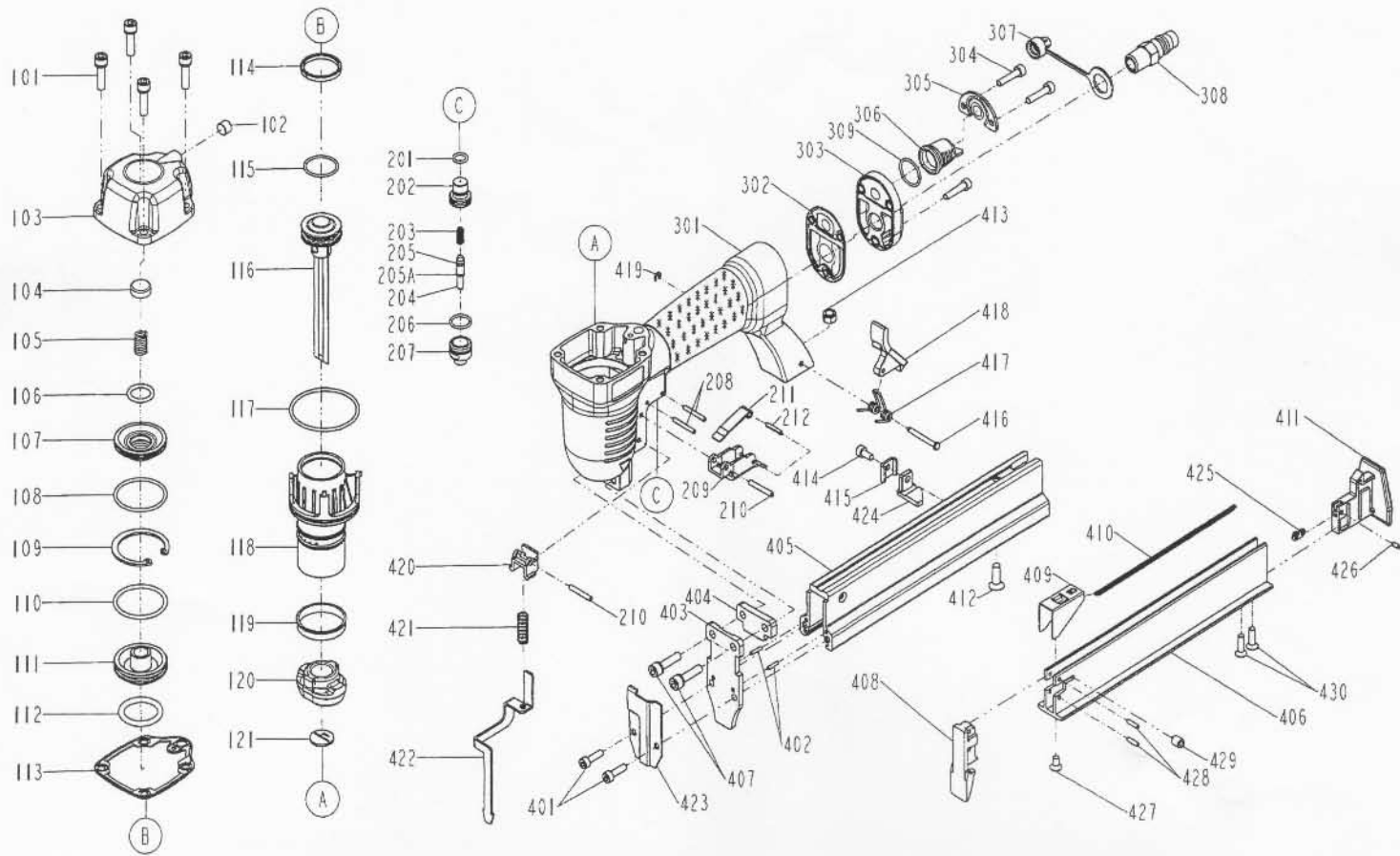


DIAGRAM OF DK80/30



ITEM NO.	PART NO.	DESCRIPTION	ITEM NO.	PART NO.	DESCRIPTION	ITEM NO.	PART NO.	DESCRIPTION
101	2040100-03030-0	BOLT ASSY	212	2040400-04070-0	SPRING PIN	424	11305-0031101-1	STOPPER
102	2040104-05010-0	HEX.SOC.HD.SCREW	301	11230-1695201-1	GUN BODY UNIT	425	11323-0044704-1	POSITIONING SHEET
103	11369-0315301-1	CAP	302	1132H-0314701-1	GASKET	426	2040401-04030-0	SPIRAL PINS
104	11370-0010003-1	SEAL	303	11346-0314302-1	END CAP	427	2040103-02050-0	COUNTER SUNK SCREW
105	11360-0010001-3	COMPRESSION SPRING	304	2040101-02090-0	HEX.SOC.HD.BOLT	428	2040400-04050-0	SPRING PIN
106	2041100-02020-0	O - RING	305	11323-0314701-1	BRACKET	429	11379-0040002-1	ROLLER
107	11399-0310001-1	COLLAR	306	11394-0314701-1	GUIDE PLATE	430	2040103-02030-0	COUNTER SUNK SCREW
108	2041105-04020-0	O - RING	307	1132L-0014701-1	DUSTY COVER			
109	1131C-0314701-1	RING	308	1135V-0000007-1	AIR PLUG			
110	2041108-04010-0	O - RING	309	2041109-02060-0	O - RING			
111	11368-0150001-1	HD.VALVE PISTON	401	2040101-02070-0	HEX.SOC.HD.BOLT			
112	2041108-03120-0	O - RING	402	11329-0314701-1	PIN-A			
113	1132M-0314701-1	PACKING	403	11351-1694701-1	DRIVER GUIDE COVER			
114	11350-0010002-1	PISTON RING	404	11380-0314701-1	GASKET			
115	2041105-03020-0	O - RING	405	11391-1694701-1	MAGAZINE B			
116	11204-1690001-1	DRIVER UNIT	406	11389-1694701-1	MAGAZINE A			
117	2041105-05030-0	O - RING	407	2040100-03030-2	BOLT ASSY			
118	11320-0310001-1	CYLINDER	408	11303-1694701-1	DRIVER GUIDE			
119	11322-0010001-1	CYLINDER RING	409	11363-1694701-1	PUSHER			
120	11327-0314701-3	BUMPER	410	11328-0030001-1	PULL SPRING			
121	11388-1694701-1	DRIVER GUIDE	411	11347-1694701-1	REAR PLATE			
201	2041102-01020-0	O - RING	412	2040103-03040-0	COUNTER SUNK SCREW			
202	11373-0150001-2	TRIGGER VALVE HEAD	413	2040500-03020-0	LOCK NUT			
203	1133U-0014701-1	SPRING	414	2040101-02030-0	HEX.SOC.HD.BOLT			
204	11375-0154701-1	PLUNGER	415	11305-0654701-1	STOPPER			
205	2041102-01030-0	O - RING	416	11344-0034701-1	LATCH PIN			
205A	2041102-01031-0	O - RING	417	11315-0034702-1	SPRING			
206	2041109-02030-0	O - RING	418	11343-0314702-2	LATCH			
207	11374-0154701-1	PLUNGER CAP	419	2040302-22010-0	E - RING			
208	2040400-04100-0	SPRING PIN	420	11338-0154701-1	SAFETY GUIDE			
209	11316-0154701-1	TRIGGER	421	11337-0074701-1	SAFETY SPRING			
210	2040400-05100-0	SPRING PIN	422	11330-1694701-1	SAFETY			
211	11317-0154701-1	SECONDARY TRIGGER	423	11334-1694701-1	RELIEF PLATE			