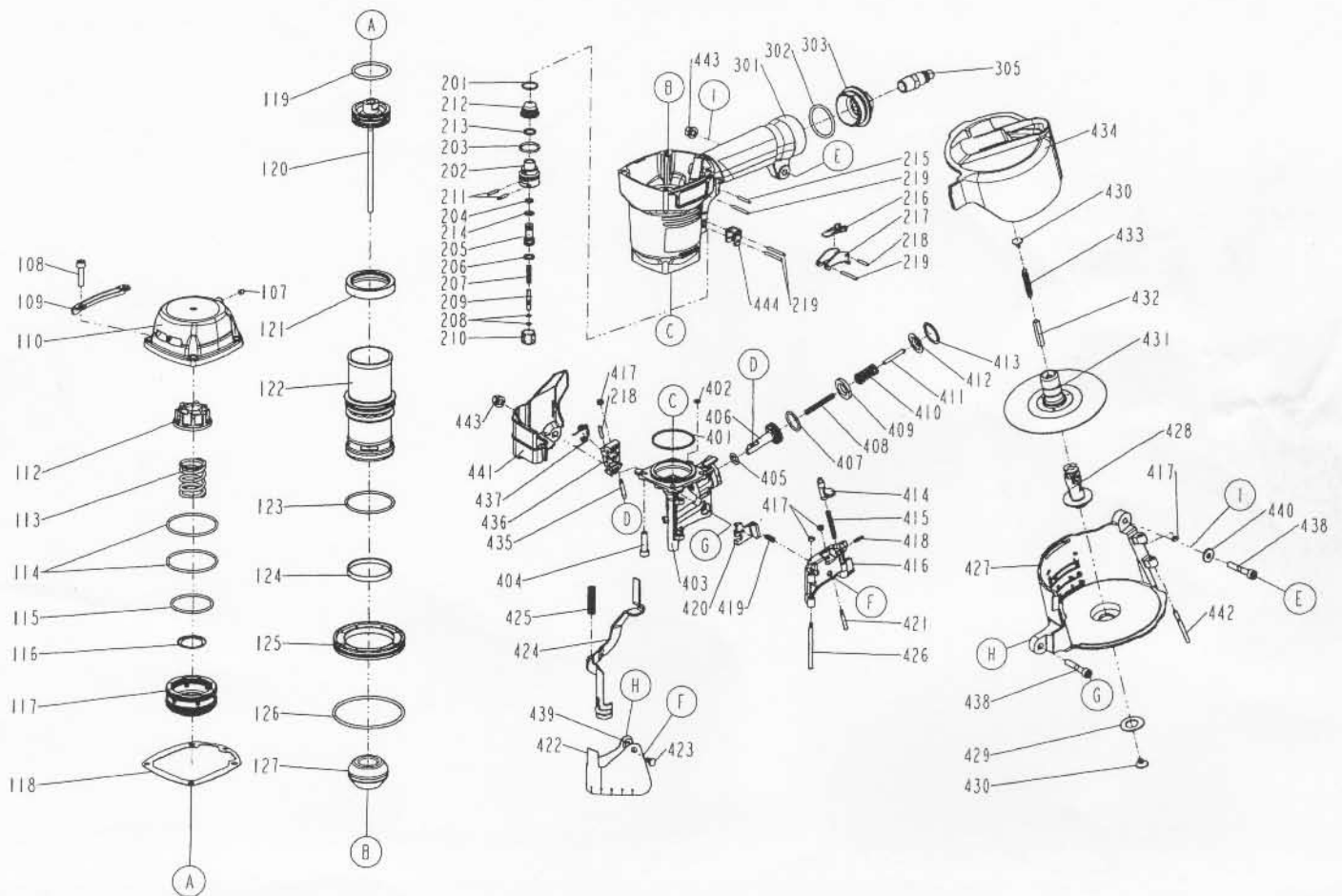


DIAGRAM OF DK/CN57



ITEM NO.	PART NO.	DESCRIPTION	ITEM NO.	PART NO.	DESCRIPTION	ITEM NO.	PART NO.	DESCRIPTION
107	2040104-03010-0	HEX.SOC.HD.SCREW	214	2041100-01050-0	O - RING	424	11330-0954701-1	SAFETY
108	2040101-04091-0	HEX.SOC.HD.BOLT	215	2040401-05100-0	SPIRAL PINS	425	11337-0954702-1	SAFETY SPRING
109	11397-0954701-1	GUIDE COVER	216	11317-0864701-1	SECONDARY TRIGGER	426	11362-0954701-1	DOOR SHAFT PIN
110	11369-0955302-1	CAP	217	11316-0864701-2	TRIGGER	427	11354-0954701-5	MAGAZINE CASE
112	11370-0950001-1	SEAL	218	2040400-05080-0	SPRING PIN	428	11357-0954701-1	MAGAZINE POST
113	11360-0950001-2	COMPRESSION SPRING	219	2040401-05150-0	SPIRAL PINS	429	1138Y-0954701-1	RUBBER RING
114	2041104-06050-0	O - RING	301	11230-0955201-1	GUN BODY UNIT	430	1134M-0864701-1	SPRING BASE
115	2041109-05100-0	O - RING	302	2041101-04020-0	O - RING	431	11356-0950001-1	SPACER
116	11381-0950002-1	WASHER	303	11346-0954302-1	END CAP	432	1138W-0860001-1	SPACER
117	11368-0950002-1	HD.VALVE PISTON	305	1135V-0000007-1	AIR PLUG	433	11328-0860001-1	PULL SPRING
118	11302-0954701-1	CYLINDER CAP SEAL	401	2041109-05110-0	O - RING	434	11355-0954703-1	MAGAZINE COVER
119	2041100-04031-0	O - RING	402	2041108-01010-0	O - RING	435	11365-0864701-1	PIN FEED PISTON
120	11204-0950001-2	DRIVER UNIT	403	11382-0954701-2	NOSE PIECE	436	11306-0954701-1	FEED FINGER 2.1/2.3 FLAT
121	11399-0954701-1	COLLAR	404	2040101-04090-2	HEX.SOC.HD.BOLT	437	11307-0864701-1	FEED FINGER SPRING
122	11320-0950001-1	CYLINDER	405	2041100-01090-0	O - RING	438	2040101-04051-0	HEX.SOC.HD.BOLT
123	2041104-06060-0	O - RING	406	11364-0954701-1	FEED PISTON	439	1135U-1010001-1	PROTECTOR WASHER
124	11322-0954701-1	CYLINDER RING	407	2041100-03051-0	O - RING	440	2040202-04010-0	FLAT WASHER
125	11321-0950001-1	CYLINDER SPACER	408	11367-0954702-1	PUSHER SPRING B	441	1134R-0954701-1	SPRING COVER
126	2041101-08020-0	O - RING	409	1134W-0950001-1	FEED BUMPER	442	1136R-0954701-1	MAGAZINE SHAFT PIN
127	11327-0954701-1	BUMPER	410	11367-0954701-1	PUSHER SPRING A	443	2040501-04010-0	BOLT CAP
201	2041104-02060-0	O - RING	411	11395-0954701-1	ROD	444	11338-0954701-1	SAFETY GUIDE
202	11374-0860001-1	PLUNGER CAP	412	11366-0954701-1	FEED PISTON CAP			
203	2041100-02050-0	O - RING	413	2040300-02010-0	C - RING			
204	2041100-01070-0	O - RING	414	11310-0864701-1	DOOR LATCH			
205	1133S-0860001-1	VALVE PLUNGER	415	11311-0860001-1	LATCH SPRING			
206	2041100-01030-0	O - RING	416	11361-0954701-3	DOOR			
207	11376-0860001-1	SPRING	417	1135H-0860001-1	PU RETAINER			
208	2041108-01020-0	O - RING	418	2040400-05060-0	SPRING PIN			
209	11375-0860002-1	PLUNGER	419	1133C-0860001-1	STOPPER FINGER SPRING			
210	11373-0860001-1	TRIGGER VALVE HEAD	420	11358-0954701-1	NAIL STOP			
211	11329-0860001-1	PIN	421	11359-0954701-1	PIN-NAIL STOP			
212	1137A-0860001-1	COVER-PLUNGER	422	11383-0950001-1	MUZZLE PROTECTOR			
213	2041104-02070-0	O - RING	423	1134B-0864701-1	DUST SHIELD PLUG			