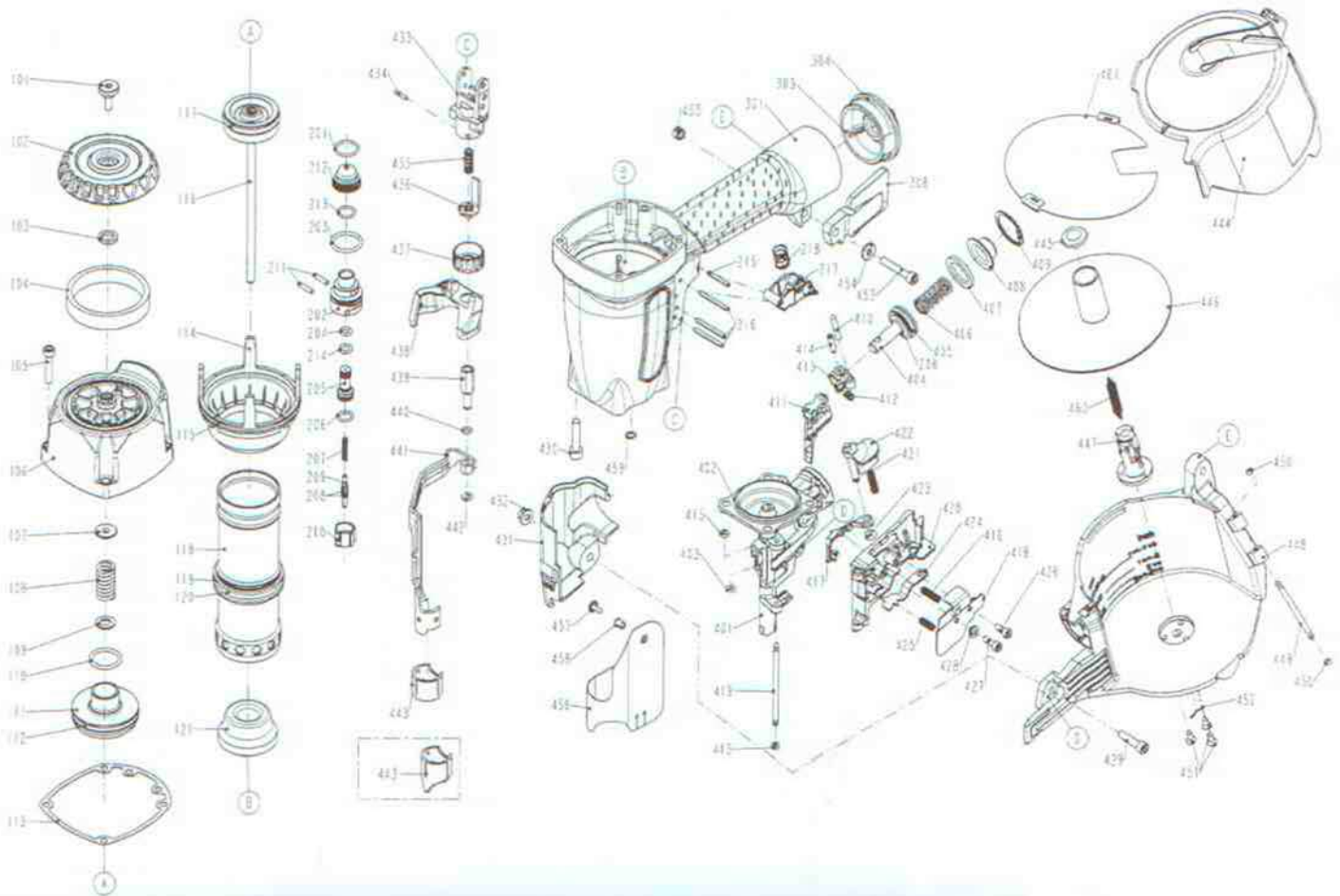


# DIAGRAM OF DK/CN65



ITEM NO.	PART NO.	DESCRIPTION	ITEM NO.	PART NO.	DESCRIPTION	ITEM NO.	PART NO.	DESCRIPTION
101	1137V-0464701-1	DEFLECTOR BOLT(3M2353)	215	2040400-05110-0	SPRING PIN	428	11398-1094702-1	LATCH SPRING BUSHING
102	11371-1164701-1	DEFLECTOR	216	2040400-05160-0	SPRING PIN	429	2040101-03100-0	HEX.SOC.HD.BOLT
103	1135G-0464701-1	RUBBER PAD	217	11224-0764701-1	TRIGGER UNIT	430	2040101-04200-2	HEX.SOC.HD.BOLT
104	1132T-1164701-1	MUFFLER	218	11376-0370001-1	SPRING	431	1134C-1164701-1	SAFETY COVER
105	2040101-03110-0	HEX.SOC.HD.BOLT	301	11230-1166601-2	GUN BODY UNIT	432	2040501-03040-0	BOLT CAP
106	11369-1160901-1	CAP	303	11346-0081302-1	END CAP	433	11338-0764701-1	SAFETY GUIDE
107	11370-1160001-1	SEAL	304	2041109-05050-0	O - RING	434	2040400-04050-0	SPRING PIN
108	11360-1160001-1	COMPRESSION SPRING	306	1133D-1084701-1	SPRING RETAINER	435	11337-0084701-1	COMPRESSION SPRING 5
109	2040201-06030-0	FLAT WASHER	401	11382-1164702-1	NOSE PIECE	436	11256-0764702-2	SAFETY B UNIT
110	2041109-03110-0	O - RING	402	2041104-05020-0	O - RING	437	11393-0761101-2	ADJUST AXIE
111	11368-1160001-2	HD VALVE PISTON	403	2041100-01020-0	O - RING	438	1137A-1164701-1	SAFETY COVER
112	2041100-05031-0	O - RING	404	11364-1164701-1	FEED PISTON	439	11393-0764701-1	ADJUST ROD
113	1132M-1164701-1	PACKING	405	2041100-03050-0	O - RING	440	2041102-01050-0	O - RING
114	11321-1160001-1	CYLINDER SPACER	406	11367-1160001-1	PUSHER SPRING	441	11254-1164701-1	SAFETY A UNIT
115	2041102-08020-0	O - RING	407	1134W-1160001-1	FEED BUMPER	442	2040302-24010-0	E - RING
116	11204-1160005-1	DRIVER UNIT	408	11366-1164701-1	FEED PISTON CAP	443	11339-0764702-1	PROTECTIVE CASING
117	2041107-04020-0	O-RING	409	2040300-03010-0	C - RING	443	11339-0764703-1	PROTECTIVE CASING
118	11320-1160001-1	CYLINDER	410	2040403-07110-0	PIN	444	11355-0760001-1	MAGAZINE COVER
119	2041102-05020-0	O - RING	411	11306-1164701-1	FEED FINGER	445	1134N-0250002-1	SPRING BASE A
120	2041100-05020-0	O - RING	412	11307-1160001-1	FEED FINGER SPRING	446	1132Y-1164701-1	NAIL BRACKET
121	11327-1164701-1	BUMPER	413	1131F-1164701-1	ANCHOR BLOCK	447	11357-1164701-1	MAGAEING POST
201	2041104-02060-0	O - RING	414	2040401-07080-0	SPIRAL PINS	448	11354-1164701-1	MAGAZINE CASE
202	11374-0860001-1	PLUNGER CAP	415	1135H-0790001-1	PU RETAINER	449	11362-0784702-1	DOOR SHAFT PIN
203	2041100-02050-0	O - RING	416	1130H-1160001-1	SPRING	450	1135H-0250001-1	SHAFT RING
204	2041100-01070-0	O - RING	417	1130G-1164701-1	FIRST STOPPER FINGER	451	2040107-02130-0	TAP BOLT
205	1133S-0860001-1	VALVE PLUNGER	418	1133H-1164701-1	NAIL GUIDE COVER	452	1133D-0254701-1	SPRING RETAINER
206	2041100-01030-0	O - RING	419	11362-1164701-2	DOOR SHAFT PIN	453	2040101-03121-0	HEX.SOC.HD.BOLT
207	11376-0254701-1	SPRING	420	11361-1164701-1	DOOR	454	2040202-03010-0	FLAT WASHER
208	2041108-01020-0	O - RING	421	11311-1160001-1	LATCH SPRING	455	2040500-03020-0	LOCK NUT
209	11375-1080001-2	PLUNGER	422	1120P-1164701-1	DOOR LATCH UNIT	456	11383-1160001-1	MUZZLE PROTECTOR
210	11373-0864701-1	TRIGGER VALVE HEAD	423	2041104-01041-0	O - RING	457	11324-0254701-1	FIXED PIN
211	11329-0860001-1	PIN	424	1130C-1164701-1	SECOND STOPPER FINGE	458	1131G-0254701-1	FIXED RING
212	1137A-0860001-1	COVER-PLUNGER	425	1130D-1160001-1	SPRING	459	2041109-01060-0	O - RING
213	2041104-02070-0	O - RING	426	2040101-02050-2	HEX.SOC.HD.BOLT	460	1132B-0860001-1	PULL SPRING
214	2041100-01050-0	O - RING	427	2040101-02070-0	HEX.SOC.HD.BOLT	461	1137E-0760001-1	FIX-PLATE