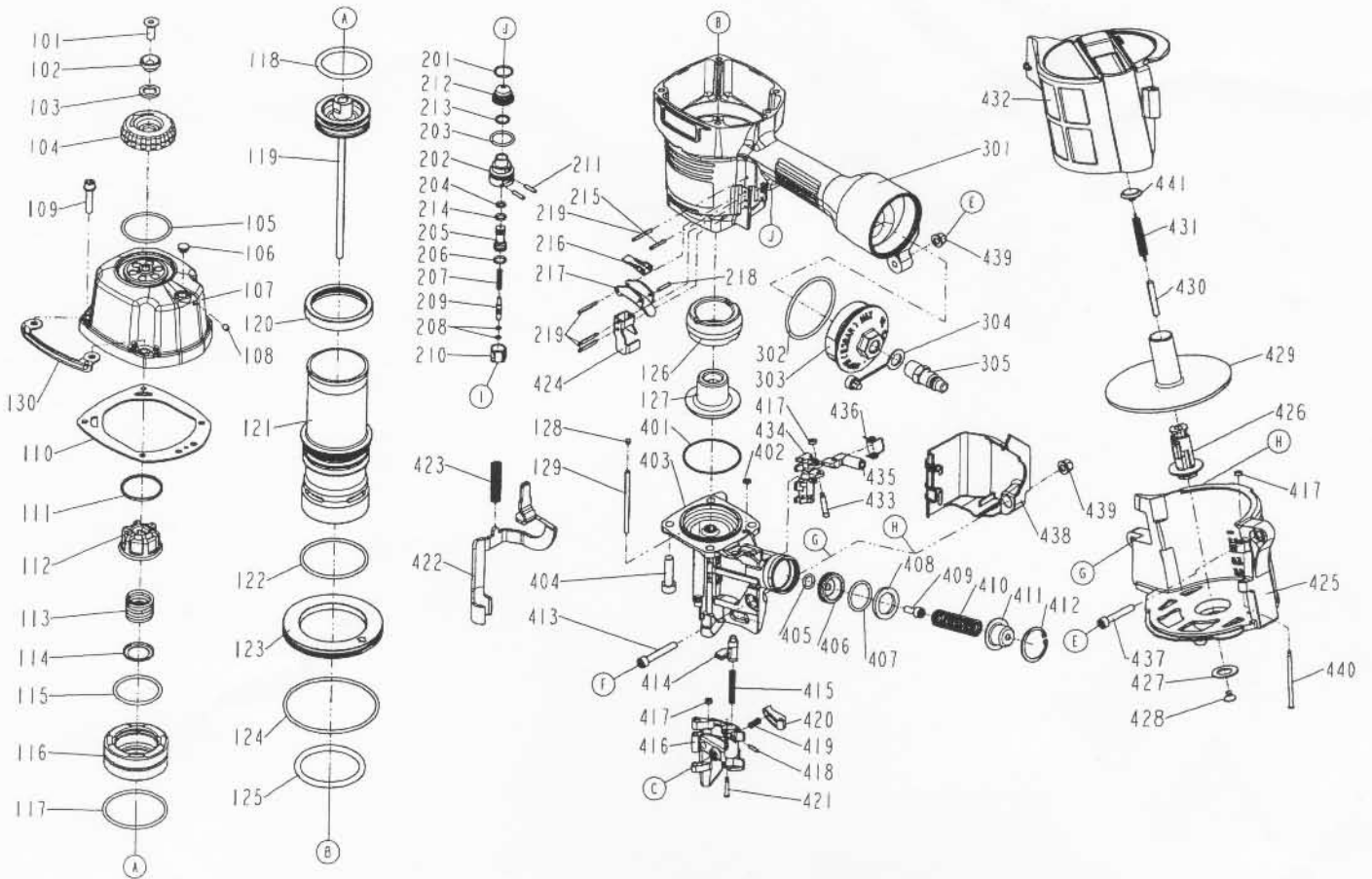


DIAGRAM OF DK/CN80



ITEM NO.	PART NO.	DESCRIPTION	ITEM NO.	PART NO.	DESCRIPTION	ITEM NO.	PART NO.	DESCRIPTION
101	2040103-05010-9	COUNTER SUNK SCREW	204	2041100-01070-0	O - RING	413	2040101-04131-0	HEX.SOC.HD.BOLT
102	11381-0954702-1	WASHER	205	11335-0860001-1	VALVE PLUNGER	414	11310-0864701-1	DOOR LATCH
103	1135G-0460001-1	RUBBER PAD	206	2041100-01030-0	O - RING	415	11311-0974701-1	LATCH SPRING
104	11371-0954701-1	DEFLECTOR	207	11376-0860001-1	SPRING	416	11361-0974701-1	DOOR
105	2041102-05050-0	O - RING	208	2041108-01020-0	O - RING	417	1135H-0860001-1	PU RETAINER
106	1135S-0350001-1	GROMMET	209	11375-0860002-1	PLUNGER	418	2040400-05060-0	SPRING PIN
107	11369-0975301-1	CAP	210	11373-0860001-1	TRIGGER VALVE HEAD	419	1133C-0970001-1	STOPPER FINGER SPRING
108	2040104-03010-0	HEX.SOC.HD.SCREW	211	11329-0860001-1	PIN	420	11358-0864701-1	NAIL STOP
109	2040100-04030-0	BOLT ASSY	212	1137A-0860001-1	COVER-PLUNGER	421	11359-0864701-1	PIN-NAIL STOP
110	11302-0864701-1	CYLINDER CAP SEAL	213	2041104-02070-0	O - RING	422	11330-0974702-1	SAFETY
111	11381-0970001-1	WASHER SEAL	214	2041100-01050-0	O - RING	423	11337-0864701-1	SAFETY SPRING
112	11370-0970001-1	SEAL	215	2040401-05100-0	SPIRAL PINS	424	11338-0864701-1	SAFETY GUIDE
113	11360-0354701-3	COMPRESSION SPRING	216	11317-0864701-1	SECONDARY TRIGGER	425	11354-0974701-1	MAGAZINE CASE
114	11381-0864701-1	WASHER	217	11316-0864701-2	TRIGGER	426	11357-0954701-1	MAGAEING POST
115	2041108-05070-0	O - RING	218	2040400-05080-0	SPRING PIN	427	1138Y-0954701-1	RUBBER RING
116	11368-0970001-2	HD.VALVE PISTON	219	2040401-05120-0	SPIRAL PINS	428	1134M-0864701-1	SPRING BASE
117	2041108-06050-0	O - RING	301	11230-0865201-1	GUN BODY UNIT	429	11356-0974701-1	SPACER
118	2041108-05060-0	O - RING	302	2041101-05020-0	O - RING	430	1138W-0860001-1	SPACER
119	11204-0970001-2	DRIVER UNIT	303	11346-0864302-1	END CAP	431	11328-0970001-1	PULL SPRING
120	11399-0860001-1	COLLAR	304	1132L-0350001-1	AIR PLUG CAP	432	11355-0974701-2	MAGAZINE COVER
121	11320-0970001-1	CYLINDER	305	1135V-0000009-1	AIR PLUG	433	11365-0864701-1	PIN FEED PISTON
122	2041108-06010-0	O - RING	401	2041108-06080-0	O - RING	434	11306-0974701-1	FEED FINGER
123	11321-0860001-1	CYLINDER SPACER	402	2041108-01010-0	O - RING	435	11364-0974701-1	FEED PISTON-A
124	2041101-09020-0	O - RING	403	11382-0974701-1	NOSE PIECE	436	11307-0970001-1	FEED FINGER SPRING
125	2041100-06010-0	O - RING	404	2040101-05040-2	HEX.SOC.HD.BOLT	437	2040101-04121-0	HEX.SOC.HD.BOLT
126	11327-0864701-1	BUMPER-A	405	2041100-01090-0	O - RING	438	1134R-0974701-1	SPRING COVER
127	11327-0864702-1	BUMPER-B	406	11364-0974702-1	FEED PISTON-B	439	2040501-04010-0	BOLT CAP
128	1135S-0860001-1	GROMMET A	407	2041104-03040-0	O - RING	440	1136R-0864701-1	MAGAZINE SHAFT PIN
129	11362-0864701-1	DOOR SHAFT PIN	408	1134W-0970001-1	FEED BUMPER	441	1134N-1014701-1	SPRING BASE A
130	11397-0864701-1	GUIDE COVER	409	2040100-04080-2	BOLT ASSY			
201	2041104-02060-0	O - RING	410	11367-0970001-1	PUSHER SPRING			
202	11374-0860001-1	PLUNGER CAP	411	11366-0974701-1	FEED PISTON CAP			
203	2041100-02050-0	O - RING	412	2040300-08010-0	C - RING			