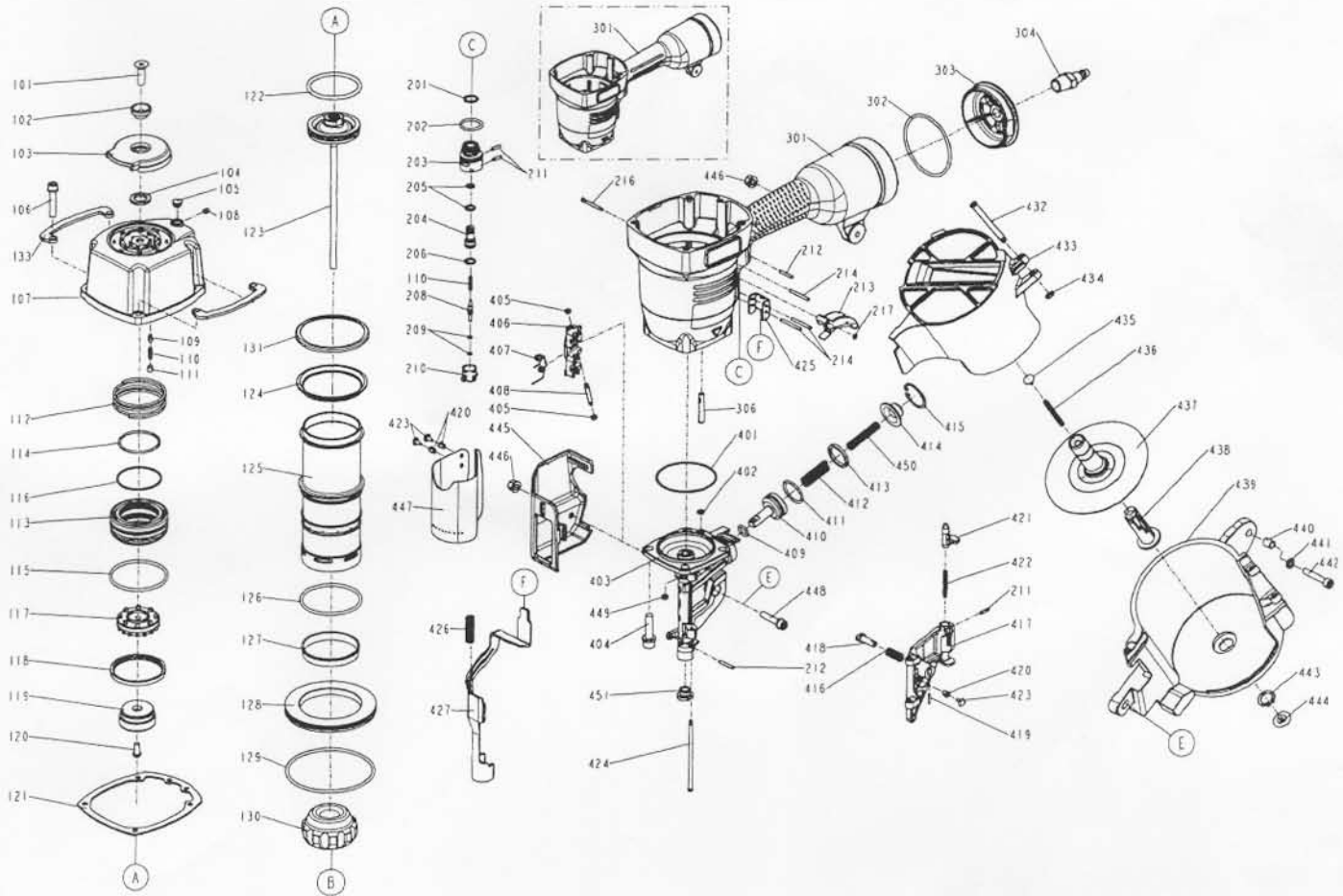


DIAGRAM OF DK/CN90



| ITEM NO. | PART NO. | DESCRIPTION | ITEM NO. | PART NO. | DESCRIPTION | ITEM NO. | PART NO. | DESCRIPTION |
|----------|-----------------|------------------------|----------|-----------------|--------------------|----------|-----------------|-----------------------|
| 101 | 2040103-05010-2 | COUNTER SUNK SCREW | 202 | 2041104-02030-0 | O - RING | 415 | 2040300-04010-0 | C - RING |
| 102 | 1136B-0374701-1 | DEFLECTOR PAD | 203 | 11374-0084701-1 | PLUNGER CAP | 416 | 1133C-0790001-2 | STOPPER FINGER SPRING |
| 103 | 11371-0374701-2 | DEFLECTOR | 204 | 1133S-0250001-1 | VALVE PLUNGER | 417 | 11361-0794706-1 | DOOR |
| 104 | 1135G-0374701-1 | RUBBER PAD | 205 | 2041100-01070-0 | O - RING | 418 | 11358-0794704-1 | NAIL STOP |
| 105 | 1135S-0350001-1 | GROMMET | 206 | 2041100-01030-0 | O - RING | 419 | 2040401-04060-0 | SPIRAL PINS |
| 106 | 2040100-04060-0 | BOLT ASSY | 208 | 11375-0084701-1 | PLUNGER | 420 | 1131G-0254701-1 | FIXED RING |
| 107 | 11369-0375301-1 | CAP | 209 | 2041102-01030-0 | O - RING | 421 | 11310-0864701-1 | DOOR LATCH |
| 108 | 2040104-03010-0 | HEX.SOC.HD.SCREW | 210 | 11373-0084701-1 | TRIGGER VALVE HEAD | 422 | 11311-0974701-1 | LATCH SPRING |
| 109 | 1136C-0374701-1 | POSITIONING AXIS | 211 | 2040400-05060-0 | SPRING PIN | 423 | 11324-0254701-1 | FIXED PIN |
| 110 | 11376-0254701-1 | SPRING | 212 | 2040401-05100-0 | SPIRAL PINS | 424 | 11362-0794704-1 | DOOR SHAFT PIN |
| 111 | 2040104-04010-0 | HEX.SOC.HD.SCREW | 213 | 11224-0374701-2 | TRIGGER UNIT | 425 | 11338-0374701-1 | SAFETY GUIDE |
| 112 | 11360-0374701-3 | COMPRESSION SPRING | 214 | 2040401-05160-0 | SPIRAL PINS | 426 | 11337-0794701-1 | SAFETY SPRING |
| 113 | 11368-0370002-3 | HD.VALVE PISTON | 216 | 11318-0374701-1 | TRIGGER PIVOT PIN | 427 | 11330-0794703-1 | SAFETY |
| 114 | 2041109-05070-0 | O - RING | 217 | 1131D-0460001-1 | URETHANE RETAINER | 432 | 1132V-0794702-1 | PIN |
| 115 | 2041108-07021-0 | O - RING | 301 | 11230-0795204-1 | GUN BODY UNIT | 433 | 11355-0794702-1 | MAGAZINE COVER |
| 116 | 2041109-05080-0 | O - RING | 302 | 2041106-07010-0 | O - RING | 434 | 1131G-0794702-1 | FIXED RING |
| 117 | 1136N-0370001-2 | VALVE | 303 | 11346-0374A01-1 | END CAP | 435 | 1134M-0864701-1 | SPRING BASE |
| 118 | 11399-0370001-1 | COLLAR | 304 | 1135V-0000017-1 | AIR PLUG | 436 | 11328-0794701-1 | PULL SPRING |
| 119 | 11370-0370002-1 | SEAL | 306 | 1136U-0794701-1 | FILTER | 437 | 11289-0790001-1 | SPACER |
| 120 | 2040102-04010-0 | HALF ROUND HD.HEX.BOLT | 401 | 2041104-07010-0 | O - RING | 438 | 11357-0794701-1 | ADJUST POST |
| 121 | 11302-0374701-3 | CYLINDER CAP SEAL | 402 | 2041100-01020-0 | O - RING | 439 | 11354-0794702-2 | MAGAZINE CASE |
| 122 | 2041107-06010-0 | O-RING | 403 | 11382-0794704-1 | NOSE PIECE | 440 | 11398-0254702-1 | LATCH SPRING BUSHING |
| 123 | 11204-0790017-1 | DRIVER UNIT | 404 | 2040100-05010-2 | BOLT ASSY | 441 | 2040201-04020-0 | FLAT WASHER |
| 124 | 1135J-0370001-2 | PRESS RING | 405 | 1135H-0790001-1 | PU RETAINER | 442 | 2040101-04120-0 | HEX.SOC.HD.BOLT |
| 125 | 11320-0370003-1 | CYLINDER | 406 | 11306-0794701-3 | FEED FINGER | 443 | 2040301-11010-0 | S - RING |
| 126 | 2041101-06010-0 | O - RING | 407 | 11307-0790001-1 | FEED FINGER SPRING | 444 | 1134M-0250002-1 | SPRING BASE |
| 127 | 11322-0370002-1 | CYLINDER RING | 408 | 11365-0794701-1 | PIN FEED PISTON | 445 | 1134C-0794701-1 | SAFETY COVER |
| 128 | 11321-0370001-2 | CYLINDER SPACER | 409 | 2041100-01090-0 | O - RING | 446 | 2040501-04010-0 | BOLT CAP |
| 129 | 2041101-09010-0 | O - RING | 410 | 11364-0794701-1 | FEED PISTON | 447 | 11383-0790001-1 | MUZZLE PROTECTOR |
| 130 | 11327-0370001-4 | BUMPER | 411 | 2041104-03020-0 | O - RING | 448 | 2040100-04030-0 | BOLT ASSY |
| 131 | 1136D-0374701-1 | PRESS RING | 412 | 1133F-0794701-1 | FEED PISTON SPRING | 449 | 1135H-0860001-1 | PU RETAINER |
| 133 | 11397-0794701-1 | GUIDE COVER | 413 | 1134W-0790001-1 | FEED BUMPER | 450 | 11337-1014701-1 | SAFETY SPRING |
| 201 | 2041104-02020-0 | O - RING | 414 | 11366-0794701-1 | FEED PISTON CAP | 451 | 11398-1030002-1 | WEAR BUSHING |