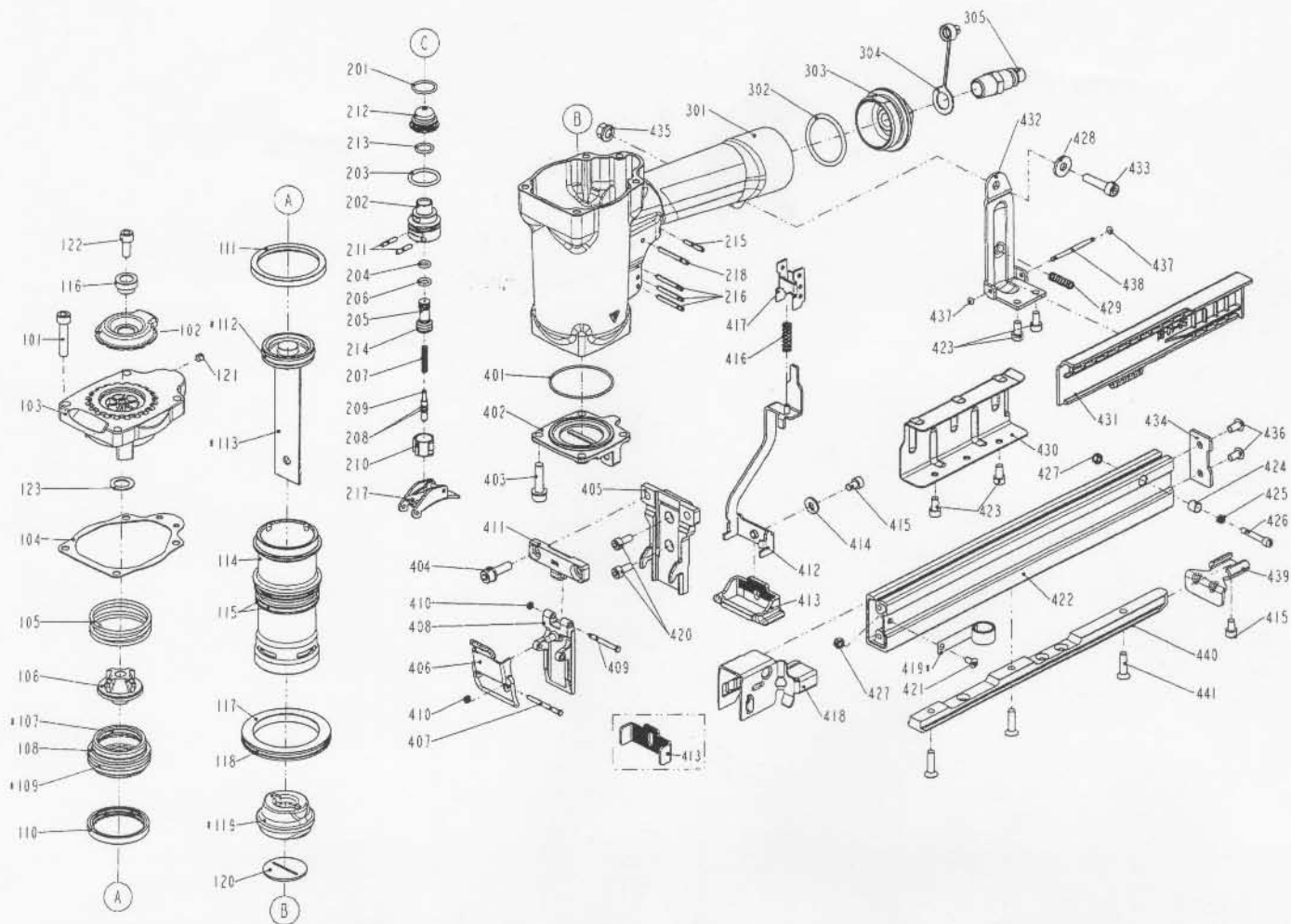


DIAGRAM OF DK16WC/38



ITEM NO.	PART NO.	DESCRIPTION	ITEM NO.	PART NO.	DESCRIPTION	ITEM NO.	PART NO.	DESCRIPTION
101	2040101-04110-0	HEX.SOC.HD.BOLT	211	11329-0860001-1	PIN	421	2040102-02010-0	HALF ROUND HD.HEX.BOLT
102	11371-0084301-1	DEFLECTOR	212	1137A-0860001-1	COVER-PLUNGER	422	11389-0104703-1	MAGAZINE A
103	11369-0825301-1	CAP	213	2041104-02070-0	O - RING	423	2040101-03040-2	HEX.SOC.HD.BOLT
104	11302-0824701-1	CYLINDER CAP SEAL	214	2041100-01030-0	O - RING	424	1132N-1740001-1	DEEP IMPACT SOCKET 1
105	11360-0460001-3	COMPRESSION SPRING	215	2040401-05100-0	SPIRAL PINS	425	11311-0074701-1	LATCH SPRING
106	11370-0820001-1	SEAL	216	2040401-05150-0	SPIRAL PINS	426	11310-1744701-1	DOOR LATCH
107	2041104-04070-0	O - RING	217	11224-0074701-1	TRIGGER UNIT	427	2040500-02020-0	LOCK NUT
108	11368-0820001-1	HD.VALVE PISTON	218	2040401-05160-0	SPIRAL PINS	428	2040202-04010-0	FLAT WASHER
109	2041109-05030-0	O - RING	301	11230-0825204-1	GUN BODY UNIT	429	11311-0104701-1	LATCH SPRING
110	11399-0460002-1	COLLAR	302	2041101-04020-0	O - RING	430	11314-0104702-1	STAPLERS BRACKET
111	1135J-0070001-1	PRESS RING	303	11346-0954302-1	END CAP	431	11348-0104701-1	MOUNTING BRACKET
112	2041104-04081-0	O - RING	304	1132L-0010001-1	AIR PLUG CAP	432	11323-0104704-1	POSITIONING SHEET
113	11204-0100011-1	DRIVER UNIT	305	1135V-0000007-1	AIR PLUG	433	2040101-04091-0	HEX.SOC.HD.BOLT
114	11320-0820001-1	CYLINDER	401	2041109-05160-0	O - RING	434	11397-0104701-1	GUIDE COVER
115	2041104-05030-0	O - RING	402	11326-1744701-1	BASE	435	2040501-04010-0	BOLT CAP
116	11381-0074702-1	WASHER	403	2040101-04090-2	HEX.SOC.HD.BOLT	436	2040102-03020-2	HALF ROUND HD.HEX.BOLT
117	11321-0820001-1	CYLINDER SPACER	404	2040100-04010-2	BOLT ASSY	437	2041109-01010-0	O - RING
118	2041104-07020-0	O - RING	405	11303-0104705-1	DRIVER GUIDE	438	1135N-0074701-1	HINGE POINT
119	11327-1744701-1	BUMPER	406	11244-1744701-1	LOCK HANDLE UNIT	439	11299-0104701-1	STOPPER UNIT
120	11388-1744701-1	DRIVER GUIDE	407	1131K-1744701-1	PIN	440	1130T-0104701-1	STOPPER
121	2040104-03010-0	HEX.SOC.HD.SCREW	408	11352-0104703-1	DRIVER GUIDE COVER A	441	2040103-03050-2	COUNTER SUNK SCREW
122	2040101-04030-2	HEX.SOC.HD.BOLT	409	11324-0104701-1	FIXED PIN			
123	11381-0100001-1	WASHER	410	1131D-0460001-1	URETHANE RETAINER			
201	2041104-02060-0	O - RING	411	11353-1744701-1	DRIVER GUIDE COVER B			
202	11374-0860001-1	PLUNGER CAP	412	11256-0104701-1	SAFETY B UNIT			
203	2041100-02050-0	O - RING	413	11254-0104701-1	SAFETY A UNIT			
204	2041100-01070-0	O - RING	414	2040202-03010-0	FLAT WASHER			
205	1133S-0860001-1	VALVE PLUNGER	415	2040101-03030-1	HEX.SOC.HD.BOLT			
206	2041100-01050-0	O - RING	416	11337-0084701-1	SAFETY SPRING			
207	11376-0860001-1	SPRING	417	11338-0074702-1	SAFETY GUIDE			
208	2041108-01020-0	O - RING	418	11363-1744701-1	PUSHER			
209	11375-0860002-1	PLUNGER	419	11372-0460001-1	SPRING			
210	11373-0860001-1	TRIGGER VALVE HEAD	420	2040101-03050-2	HEX.SOC.HD.BOLT			