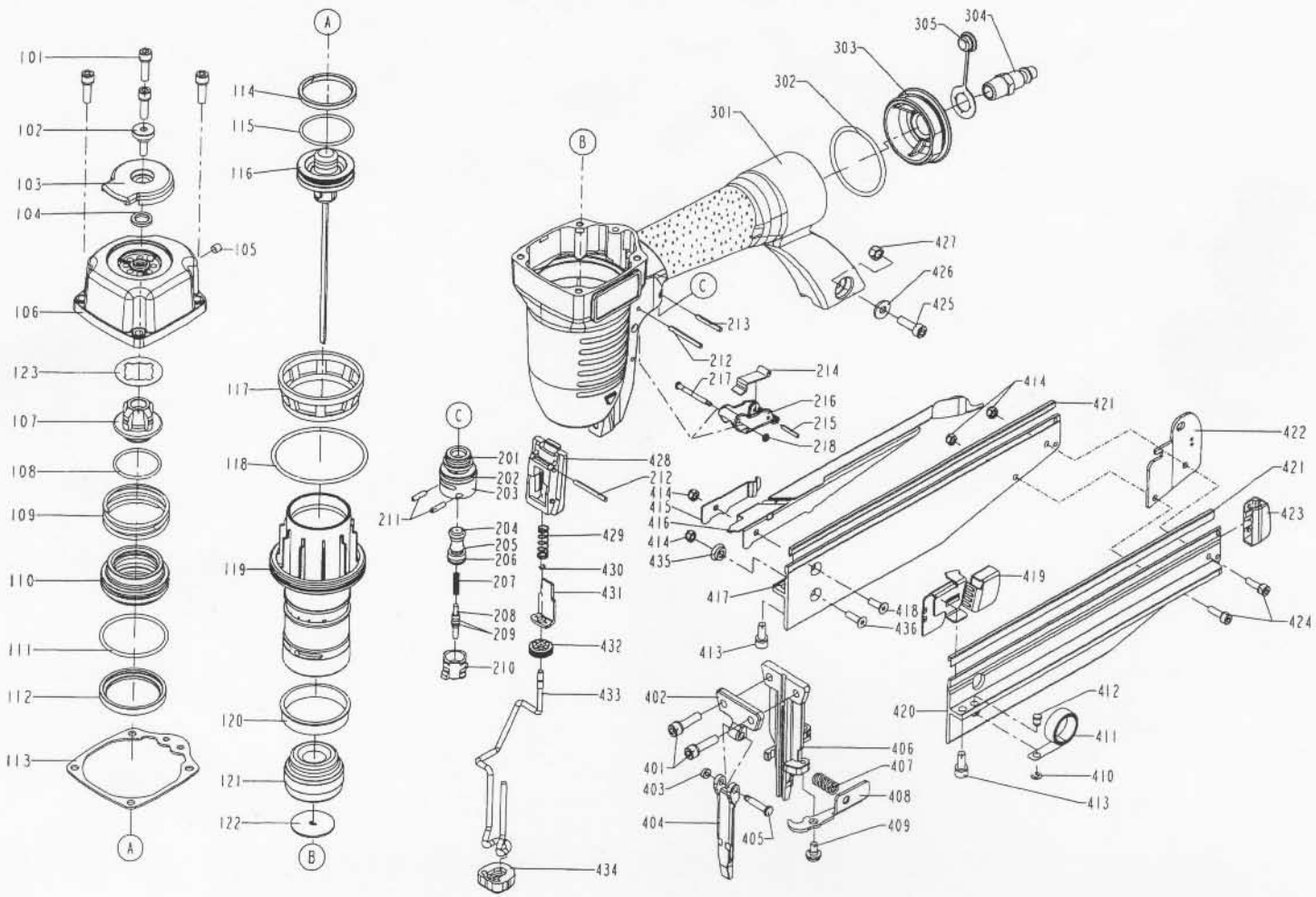


DIAGRAM OF DK/TIP65



ITEM NO.	PART NO.	DESCRIPTION	ITEM NO.	PART NO.	DESCRIPTION	ITEM NO.	PART NO.	DESCRIPTION
101	2040100-03030-0	BOLT ASSY	211	2040400-05060-0	SPRING PIN	421	11396-0080002-1	STEEL CHANNEL
102	1137V-0464701-1	DEFLECTOR BOLT(3M2353)	212	2040400-05160-0	SPRING PIN	422	11323-0084707-2	BRACKET
103	11371-0084701-1	DEFLECTOR	213	2040400-05110-0	SPRING PIN	423	11390-0084702-1	PROTECTING HOOD COVER
104	1135G-0464701-1	RUBBER PAD	214	11317-0374701-2	SECONDARY TRIGGER	424	2040100-02090-0	BOLT ASSY
105	2040104-03010-0	HEX.SOC.HD.SCREW	215	2040400-04070-0	SPRING PIN	425	2040101-03070-0	HEX.SOC.HD.BOLT
106	11369-0085303-1	CAP	216	11316-0464701-1	TRIGGER	426	2040202-03010-0	FLAT WASHER
107	11370-0080002-1	SEAL	217	11318-0374701-1	TRIGGER PIVOT PIN	427	2040500-03020-0	LOCK NUT
108	2041102-03030-0	O - RING	218	1131D-0460001-1	URETHANE RETAINER	428	11338-0084703-1	SAFETY GUIDE
109	11360-0080001-3	COMPRESSION SPRING	301	11230-0085203-1	GUN BODY UNIT	429	11337-0084701-1	SAFETY SPRING
110	11368-0080004-1	HD.VALVE PISTON	302	2041109-05050-0	O - RING	430	1131C-0664701-1	RING
111	2041109-05020-0	O - RING	303	11346-0084302-1	END CAP	431	11330-0084705-2	SAFETY
112	11399-0080001-1	COLLAR	304	1135V-0000007-1	AIR PLUG	432	11393-0264701-2	ADJUST AXIE
113	1132M-0080001-1	PACKING	305	1132L-0010001-1	AIR PLUG CAP	433	11331-0084702-2	SAFETY A
114	11350-0080001-1	PISTON RING	401	2040100-03030-2	BOLT ASSY	434	11339-0084701-1	PROTECTIVE CASING
115	2041105-04030-0	O - RING	402	11353-0084704-1	DRIVER GUIDE COVER B	435	1136H-0084701-1	FIXED SUPPORT
116	11204-0080036-1	DRIVER UNIT	403	1135H-0790001-1	PU RETAINER	436	2040103-02030-0	COUNTER SUNK SCREW
117	1131E-0080001-1	CYLINDER PRESS RING	404	11352-0084705-1	DRIVER GUIDE COVER A			
118	2041109-05010-0	O - RING	405	11324-0084701-1	FIXED PIN			
119	11320-0080012-1	CYLINDER	406	11303-0084709-1	DRIVER GUIDE			
120	11322-0080001-1	CYLINDER RING	407	11313-0264701-1	LOCK.SPRING			
121	11327-0084701-1	BUMPER	408	1135Y-0084701-1	LATCH			
122	11388-0084706-1	DRIVER GUIDE	409	2040102-02080-0	HALF ROUND HD.HEX.BOLT			
123	1133M-0084702-1	SEAL GASKET	410	2040302-23010-0	E - RING			
201	2041104-02020-0	O - RING	411	11372-0080001-1	SPRING			
202	2041104-02030-0	O - RING	412	1134L-0084701-1	BRACKET			
203	11374-0084701-1	PLUNGER CAP	413	2040100-03090-2	BOLT ASSY			
204	1133S-0250001-1	VALVE PLUNGER	414	2040500-02010-0	LOCK NUT			
205	2041100-01070-0	O - RING	415	1134K-0084702-1	SPRING			
206	2041100-01030-0	O - RING	416	11314-0084702-1	STAPLERS BRACKET			
207	11376-0254701-1	SPRING	417	1132X-0084703-1	MAGAZINE B			
208	11375-0084701-1	PLUNGER	418	2040103-02060-0	COUNTER SUNK SCREW			
209	2041102-01030-0	O - RING	419	11363-0084706-1	PUSHER			
210	11373-0084701-1	TRIGGER VALVE HEAD	420	1132W-0084703-1	MAGAZINE A			