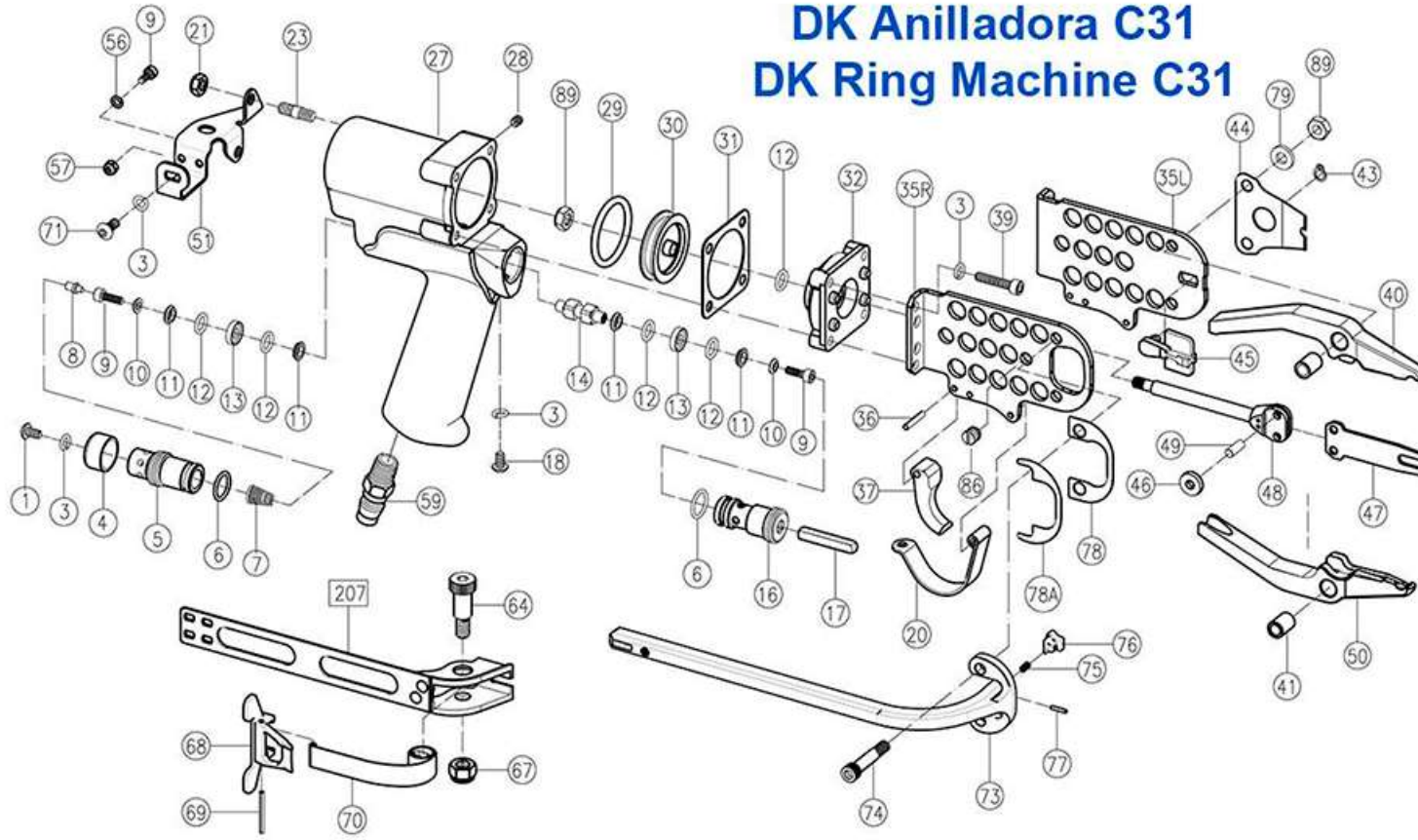
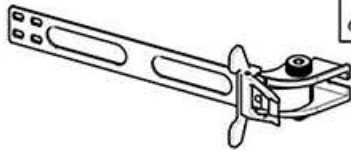


# DK Anilladora C31 DK Ring Machine C31

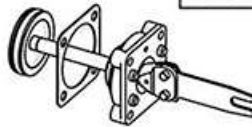


ITEM	DESCRIPTION	PART NO.	QTY
1	Set Screw	AC01001	1
3	Shakeproof lock Washer	AC01003	7
4	Air Deflector	AC01004	1
5	Rear Valve Seat	AC01005	1
6	O-Ring	AC01006	2
7	Throttle Spring	AC01007	1
8	Throttle Spring Locator	AC01008	1
9	Throttle Valve Screw	AC01009	4
10	Valve Screw Washer	AC01010	2
11	O-Ring Support	AC01011	4
12	O-Ring	AC01012	5
13	O-Ring Center Support	AC01013	2
14	Throttle Valve Spacer	AC01014	1
16	Front Valve Seat	AC01016	1
17	Throttle Stem	AC01017	1
18	Button Head Cap Screw	AC01018	1
20	Trigger Guard	AC01020	1
21	Flexloc Nut	AC01021	2
23	Stud	AC601023	2
27	Housing	AC01027	1
28	Set Screw	AC01028	2
29	O-Ring	AC01029	1
30	Piston	AC01030	1
31	Cylinder Gasket	AC01031	1
32	Piston Stop Spacer	AC01032	1
35R	Side Plate (Right)	AC0135R	1
35L	Side Plate (Left)	AC0135L	1
36	Roll Pin	AC01036	3
37	Trigger	AC01037	1
39	Socket Head Cap Screw	AC01039	4
40	Upper Jaw	AC01040	1
41	Jaw Bushing	AC01041	2
43	Latch Pin Clip	AC01043	1
44	Latch Spring	AC01044	1
45	Latch	AC01045	1
46	Roller	AC01046	4
47	Feeder Blade	AC01047	1
48	Piston Rod	AC01048	1
49	Roller Pin	AC01049	2
50	Lower Jaw	AC01050	1
51	Feeder Arm	AC601051	1
56	Washer	AE01005	2
57	Nut	AE01006	2
59	Inlet Bushing	AC01059	1
64	Socket Head Cap Screw	AC01064	1
67	Nut	AC01067	1
68	Pusher	AC601068	1
69	Extruded Rivet	AC01069	1
70	Pusher Spring	AC01070	1
71	Button Head Screw	AC01018	1
73	Magazine Body	AC01M073	1
74	Jaw Bolt	AC01074	2
75	Magazine Spring	AC01075	1
76	Magazine Shoe	AC01M076	1
77	Roll Pin	AC01077	1
78	Magazine Shim	AC01078	1
78A	Magazine Shim	AC0178A	1
79	Washer	AC01079	2
86	Plate Screw	AC01086	1
89	Flexloc Nut	AC01089	3
106	Feeder Guide Rail & Pusher Spring Assy.	AC601106	1
200	Housing Assy.	AC601200	1
201	Piston & Piston Rod Assy.	AC01201	1
202	Piston Rod Assy.	AC01202	1
203	Frame Assy.	AC01203	1
205	Pusher Assy.	AC601205	1
206	Magazine Assy.	AC01M206	1
207	Feeder Guide Rail Assy.	AC601207	1

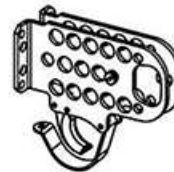
NO.106 Feeder Guide Rail & Pusher Spring Assy.  
64,67,70,205,207



NO.201 Piston & Piston Rod Assy.  
12,29,30,31,32,47,48,49,89



NO.203 Frame Assembly  
20,35R,35L,36,37,86



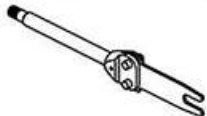
NO.200 Housing Assembly  
23,27,28



NO.206 Magazine Assembly  
73,75,76,77,82,83



NO.202 Piston Rod Assy.  
47,48,49



NO.205 Pusher Assembly  
68,69

